

On The Disk...

A run-down of what's included on the free disk with this issue

Collated and tested by Mike Orriss

Each month, subscribers to The Delphi Magazine receive a *free* companion disk packed with goodies. This includes the source code and example files for all the articles in the current issue.

But, there's much more too! We've sifted through a great many tools, components and other Delphi add-ons to bring you some of the best shareware and freeware material available, as outlined below. The headings are the directory names where you will find the files on the floppy disk.

➤ INTERNET

Listing of Delphi-related World Wide Web and ftp sites.

➤ USERGPS

List and contact information for Delphi User Groups.

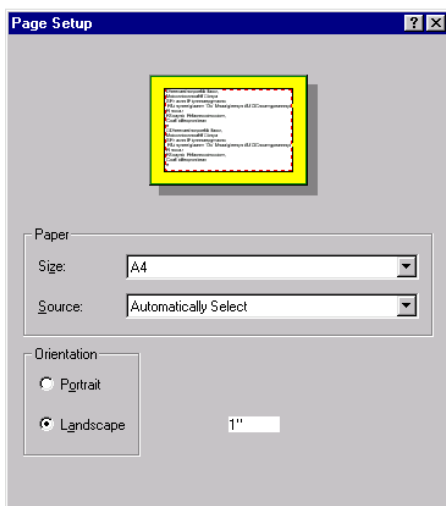
➤ GLPROPED

This is a replacement property editor for TSpeedButton and TBitBtn glyphs. Both 16- and 32-bit versions are provided. Enhanced functionality includes a glyph viewer, a favourites list and an image editor. Installation is very simple: just copy the GLPROPED.DLL to the DELPHI\BIN directory and register the component file GLPROPED.DCU as usual.

The supplied components are fully functional but do have an initial nag screen which may be disabled by supplying your registration number. You may register via Compuserve SWREG (#13229) for US\$12.

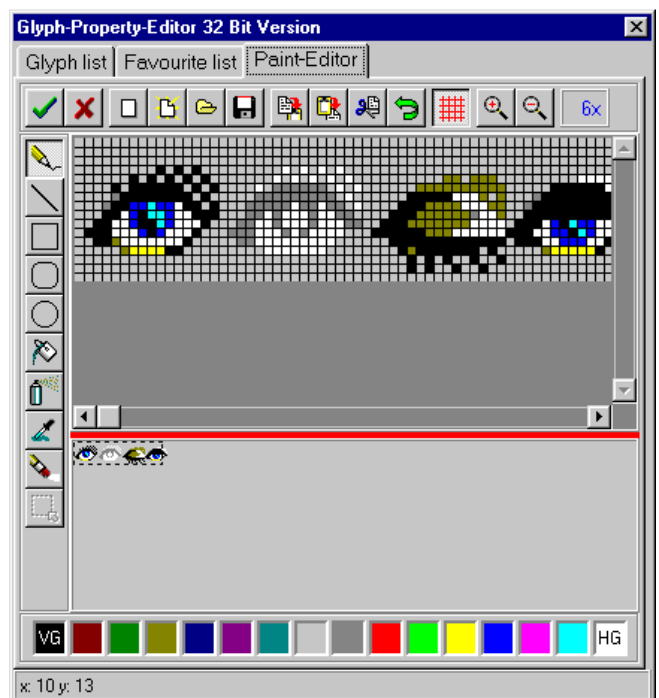
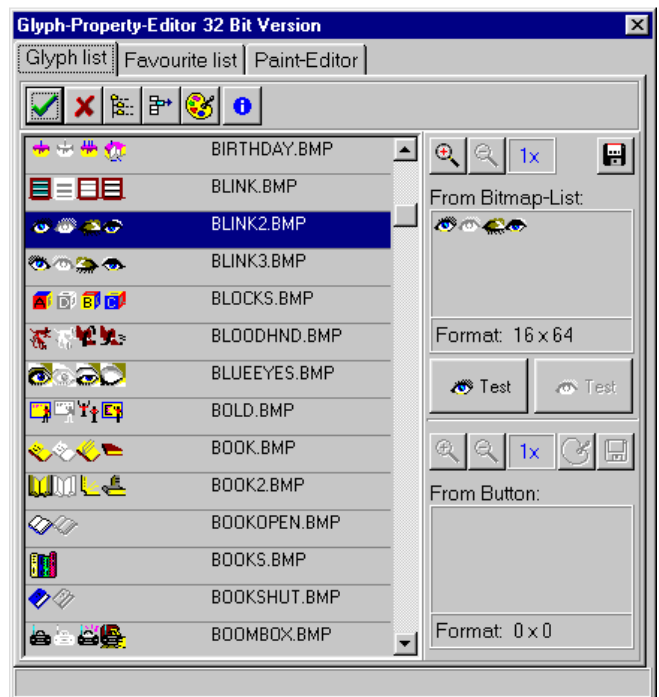
➤ JKFILT

This code is from John Kaster, co-author of *Delphi Database Development*, just about the only serious reference work for Delphi developers who want to use the full power of the Borland Database Engine (apart from *The Delphi Magazine*, of course!).



➤ *Right:*
The 32-bit
Glyph
property
editor in
action.

➤ *Left:*
Windows
95 Page
Setup
dialog
component



It demonstrates how to implement very fast filtering of datasets in Delphi using coded filters. Basically filters are a fast way of returning a subset from a dataset – effectively performing a query (typically much faster than using SQL for local database applications). Delphi 2 has brought us direct support for filters using the BDE filter “language”, which is interpreted at run time. In

Delphi 1 you have to work out how to make the direct BDE calls yourself.

John's example project shows how to do filtering using code rather than the filter "language". This means that the filtering is even faster as there is no run-time interpretation of the filter language needed. It also gives you complete flexibility: just write a simple Delphi routine which acts as a callback routine during the filtering process and away you go. And it works with Delphi 1 and Delphi 2.

➤ PGSETUP

There is no Borland supplied component that wraps the Win95 PageSetupDlg common dialog API function. This file contains the source of a Delphi 2 component which rectifies this omission and comes with an example of use (see the illustration).

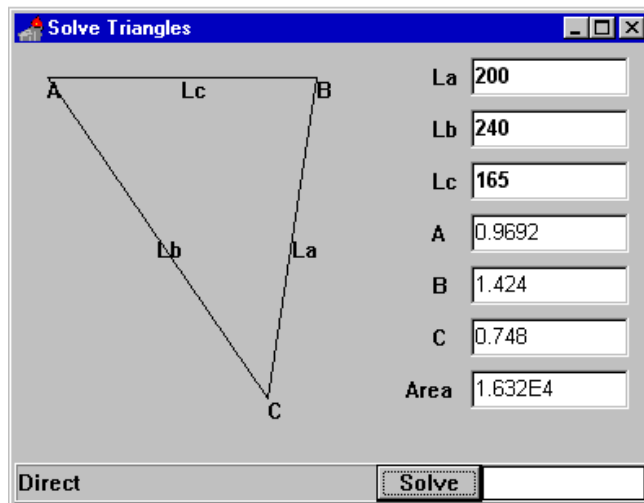
➤ SOLVER

Solver is a 16- and 32-bit component which finds the solutions to non-linear simultaneous equations or calculates the values of expressions.

The user can enter equations or expressions as a string at run time. Your code can then display or plot the calculated values. Extend the capabilities of Solver by defining the syntax and behaviour of your own Delphi functions.

Important Note!

Always, but *always* make a backup copy of your component library file *before* you take the plunge and



➤ Demo of the Solver component

install *any* new component into Delphi! Sometimes component installation can trash your component library and you will then be left with an inoperative Delphi will have to re-add *all* your extra components.

Send In Your Code...

If you have some carefully crafted routines, why not send them in for evaluation by mail or (zipped up) by CompuServe email to our Disk Editor, Mike Orriss, on 100570,121. We do consider *all* submitted files for use on future disks.